

FEMA FIRM Reanalysis and Mapping for the Town of Hull

Mitchell Buck, P.E., Coastal Engineer

Leslie Fields, CFM, Coastal Scientist

Brittany Hoffnagle, Coastal Scientist

Effective FIRM for Hull



“AE15”

- Flood Zone Designation = AE
- Base Flood Elevation (BFE) = 15 ft NAVD88

Summary Of Work to Date

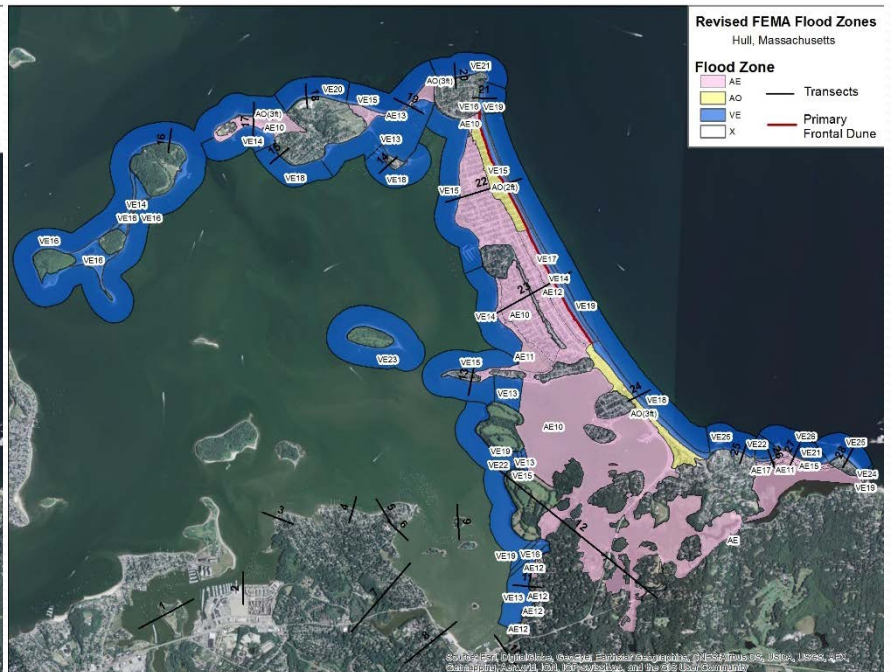
- Reviewed FEMA documents, modeling results, and data.
- Conducted a site inspection and survey
- Obtained new/updated data for model input
- Reanalyzed 16 transects by:
 - Revising Input Data for Wave and Runup models
 - Re-running Wave and runup models
- Utilized new survey and LIDAR data for mapping model results
- Prepared draft revised FIRMs

Revised Hull FEMA FIRMs

Effective



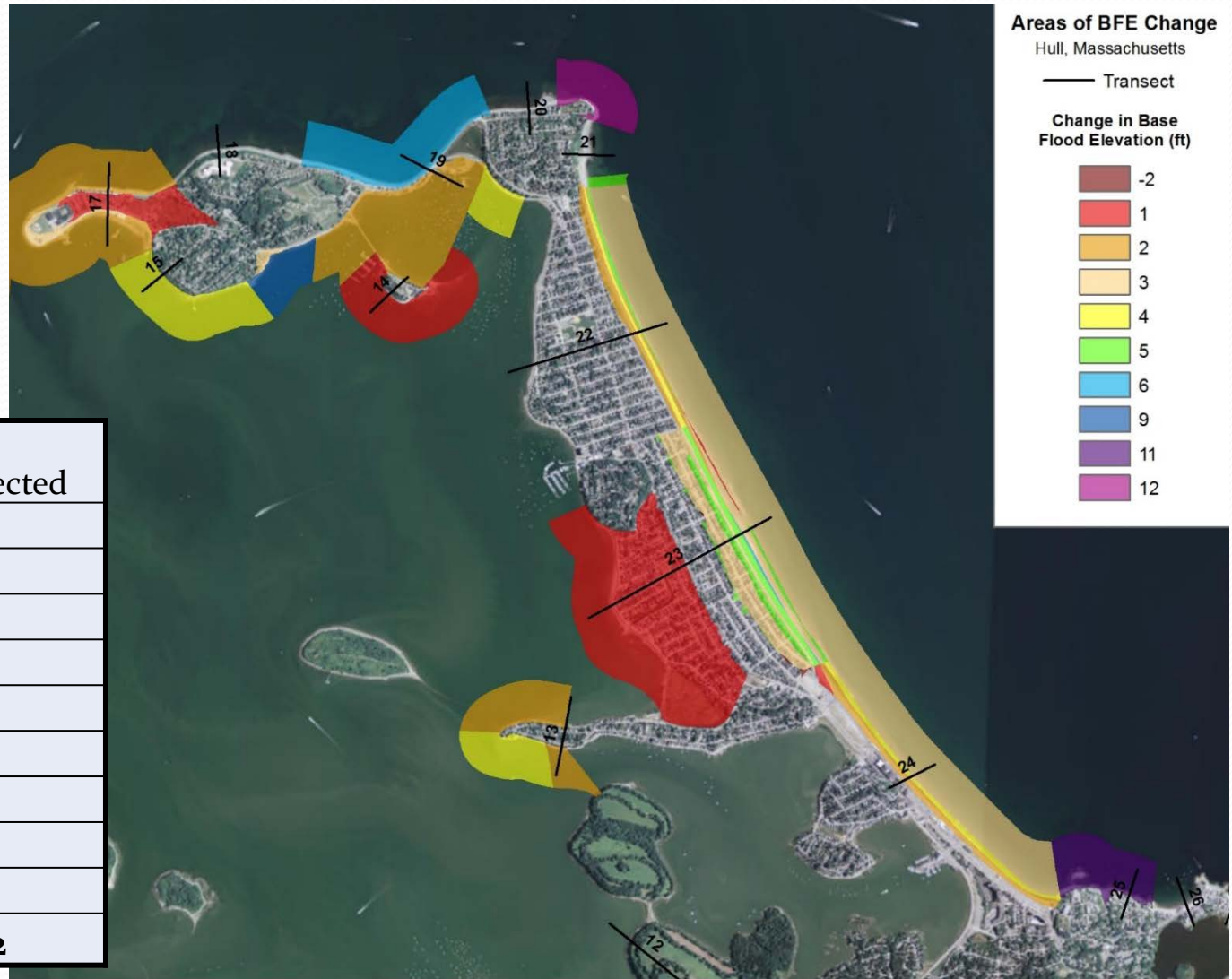
Revised



Central Hull FEMA FIRMs



Areas of Base Flood Elev. (BFE) Change



Reduction in BFE	Number of Parcels Affected
1 ft	661
2 ft	93
3 ft	202
4 ft	12
5 ft	70
6 ft	4
9 ft	1
11 ft	8
12 ft	1
Total	1052

Summary of map changes

FIRM Transect ID	Previous Mapping	Revised Mapping	BFE Reduction
13	VE(17) to AE(12)	VE(15) to AE(11)	1-2 ft
13B	AE(17)	VE(15)	2 ft
14	VE(19)	VE(18)	1 ft
15	VE(22)	VE(18)	4 ft
17	VE(18) to AO(3) to AE(11)	VE(16) to AO(3) to AE(10)	1-2 ft
17B	VE(16) to AE(13) to AE(10)	VE(14) to AE(10)	2 ft
19	VE(21) to AE(13)	VE(15) to AE(13)	6 ft
19B	VE(15) to AE(13)	VE(13) to AE(13)	2 ft
20	VE(21) to AO(3)	No Change	None
21	VE(32/33)	VE(16/21)	16 ft and 12 ft
22	VE(17) to AO(2) to AE(10)	VE(15) to AO(2) to AE(10)	2 ft
22B	VE(15) to AE(10)	No Change	None
23	VE(19) to AE (15) to AE(10)	VE(14) to AE(12) to AE(10)	3 ft
23B	VE(15) to AE (12) to AE(11)	VE(14) to AE(11) to AE(10)	1 ft
24	VE(20) to AO(3)	VE(18) to AO(3)	2 ft
25	VE(36)	VE (25)	11 ft

Next Steps

- Prepare & File Letter of Map Revision (LOMR) package including:
 - FEMA LOMR application form
 - Report documenting the science and engineering behind the changes to append the LOMR application
 - Supporting data
 - Revised Flood Insurance Rate (FIRM) Maps
- Schedule